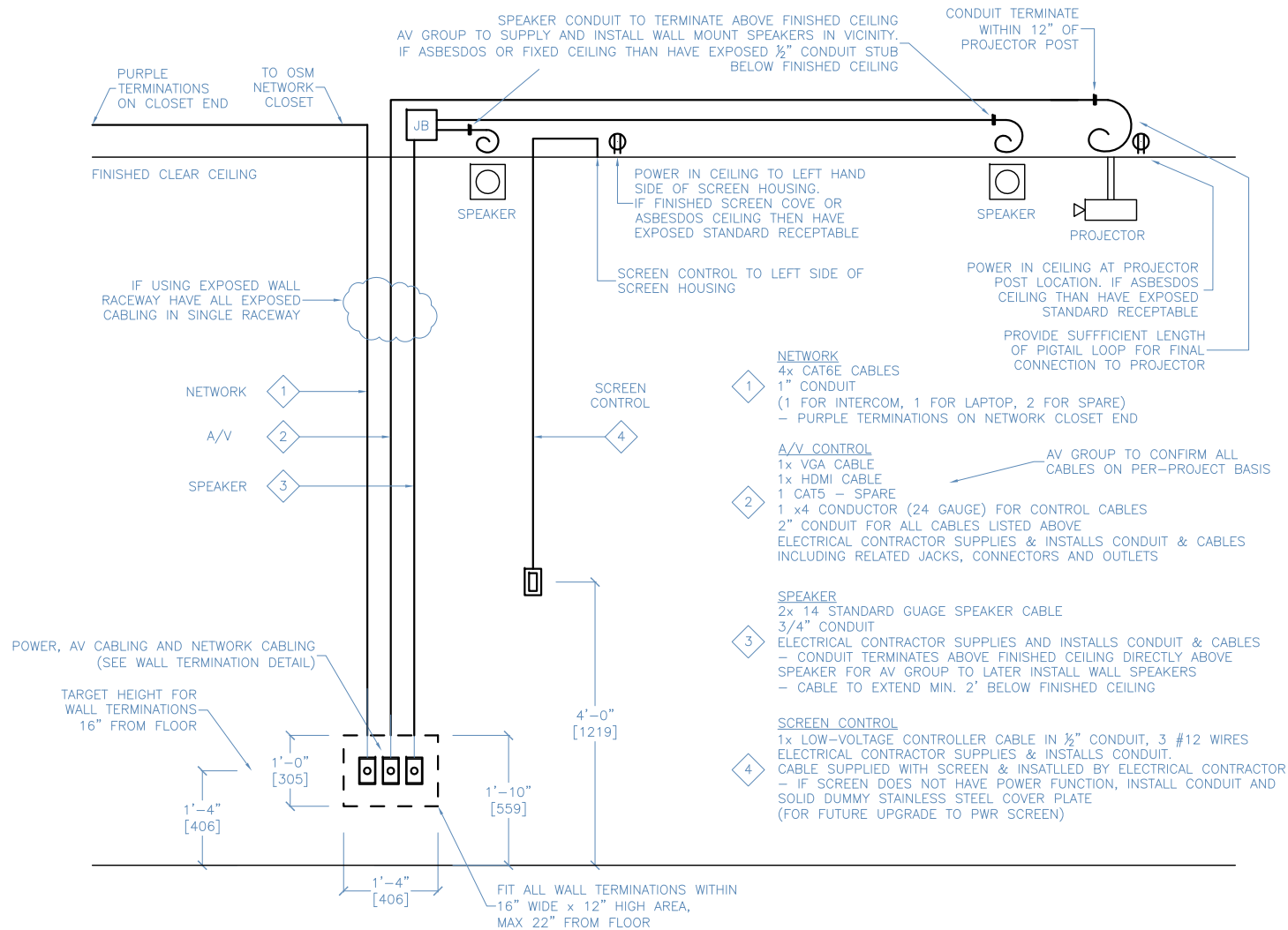


# TSJr CONDUIT – TYPICAL



## E-1 CONDUIT PLAN

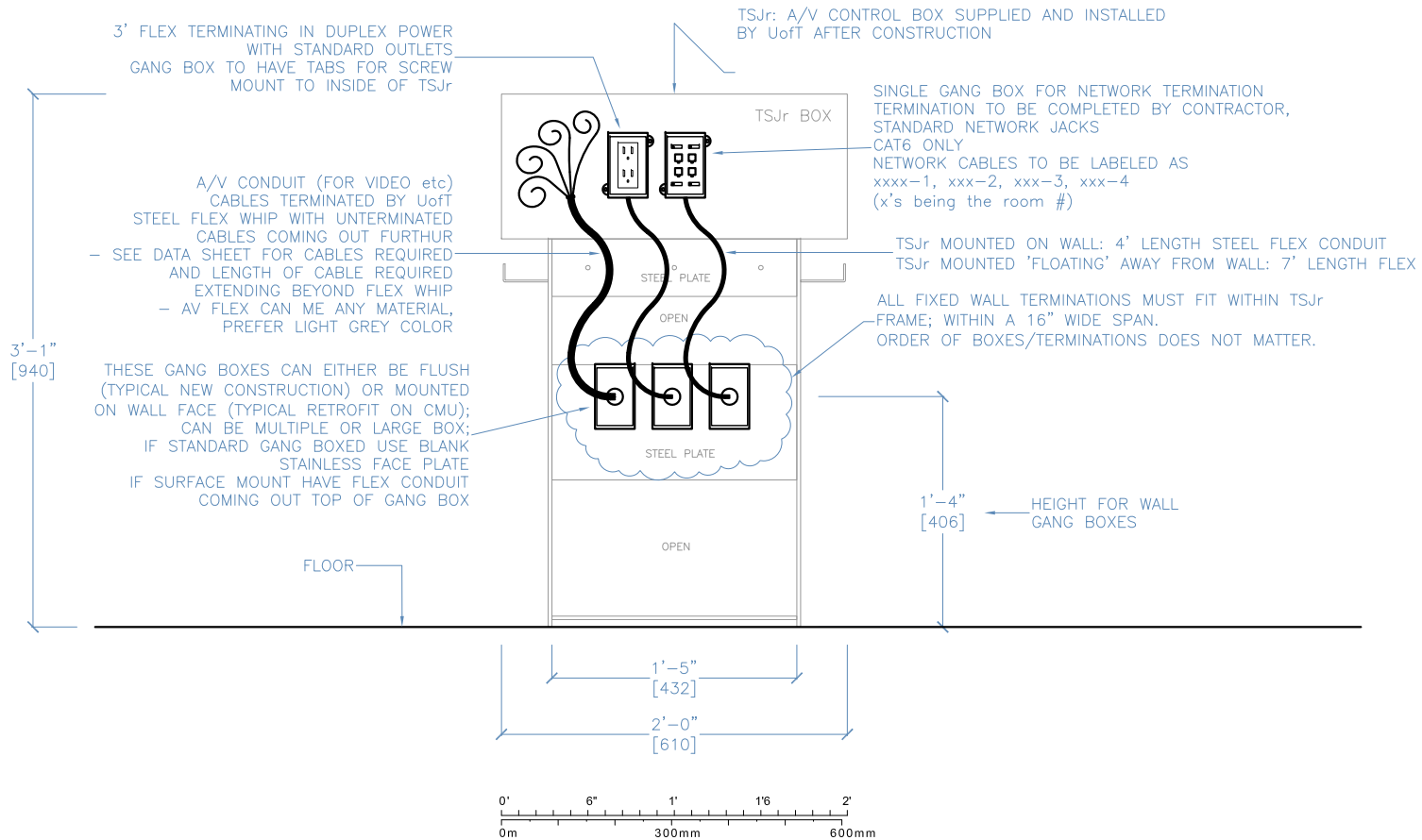
PROJECT  
 TEACHING STATION JR  
 UoT AV CONTROL BASE FOR  
 MEDIUM SIZE CLASSROOMS

DATE  
 UPDATED JAN 2013

DRAWING  
 BURL CRONE (UoT)  
 burl.crone@utoronto.ca

NOTE  
 BUILDER MAY MAKE INCREMENTAL  
 CHANGES FOR CONSTRUCTION  
 PURPOSES AS LONG AS  
 FUNCTION IS RETAINED

CLASSROOM TSJr CONDUIT DETAIL  
 burl.crone@utoronto.ca Mar 8 2012



# E-2

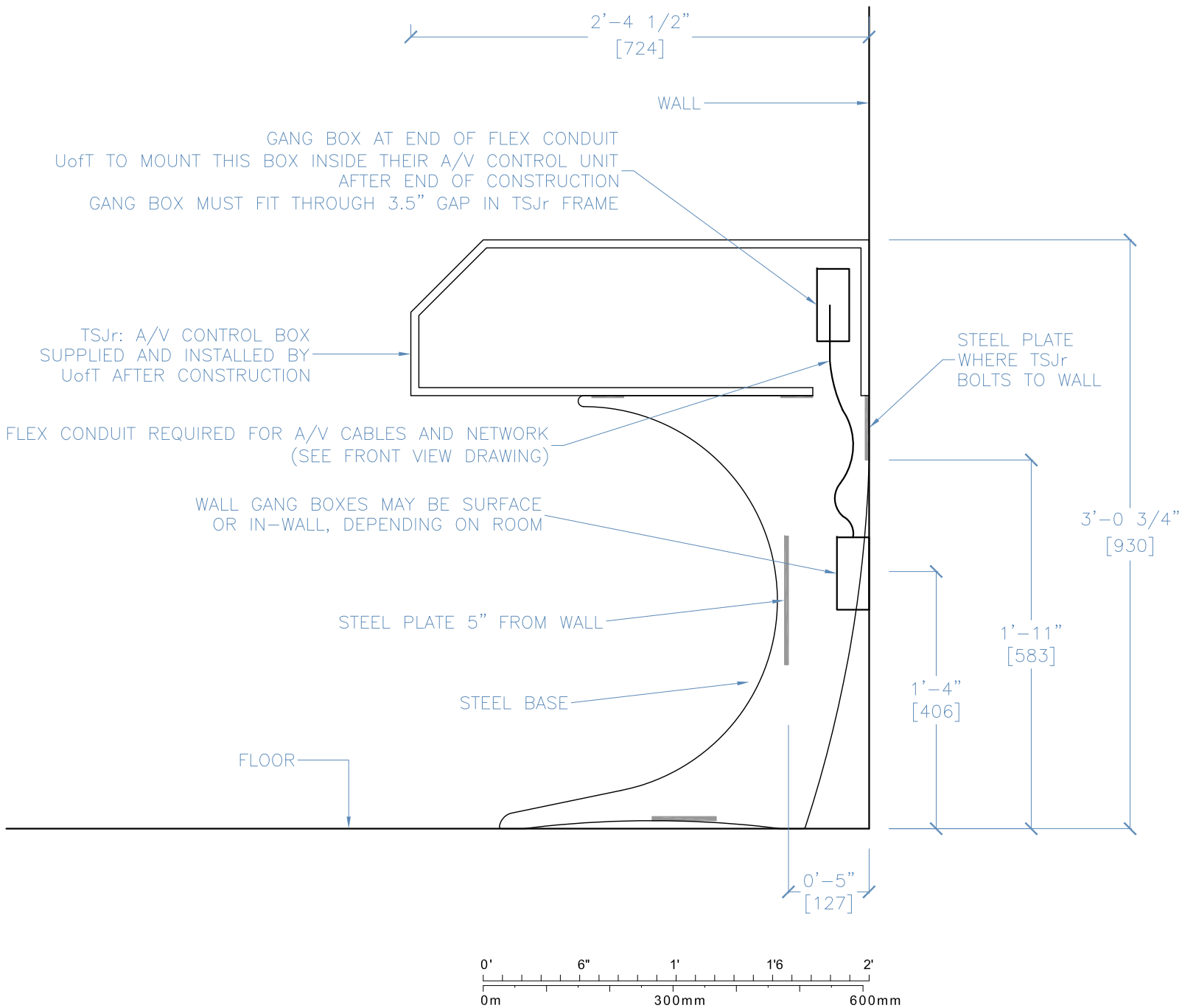
CONDUIT  
TERMINATION  
ELEVATION

PROJECT  
TEACHING STATION JR  
UofT AV CONTROL BASE FOR  
MEDIUM SIZE CLASSROOMS

DATE  
UPDATED JAN 2013

DRAWING  
BURL CRONE (UofT)  
burl.crone@utoronto.ca

NOTE  
BUILDER MAY MAKE INCREMENTAL  
CHANGES FOR CONSTRUCTION  
PURPOSES AS LONG AS  
FUNCTION IS RETAINED



# E-3

## CONDUIT TERMINATION SECTION

### PROJECT

TEACHING STATION JR  
UoFT AV CONTROL BASE FOR  
MEDIUM SIZE CLASSROOMS

### DATE

UPDATED JAN 2013

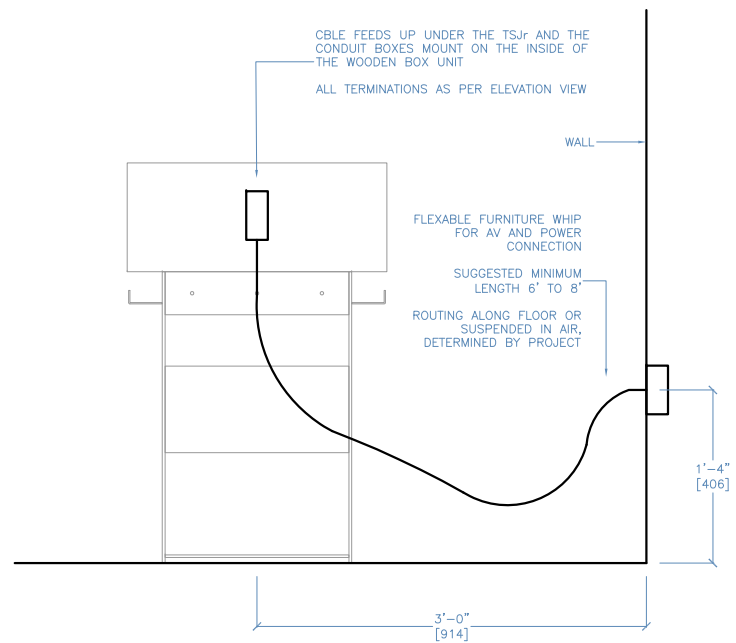
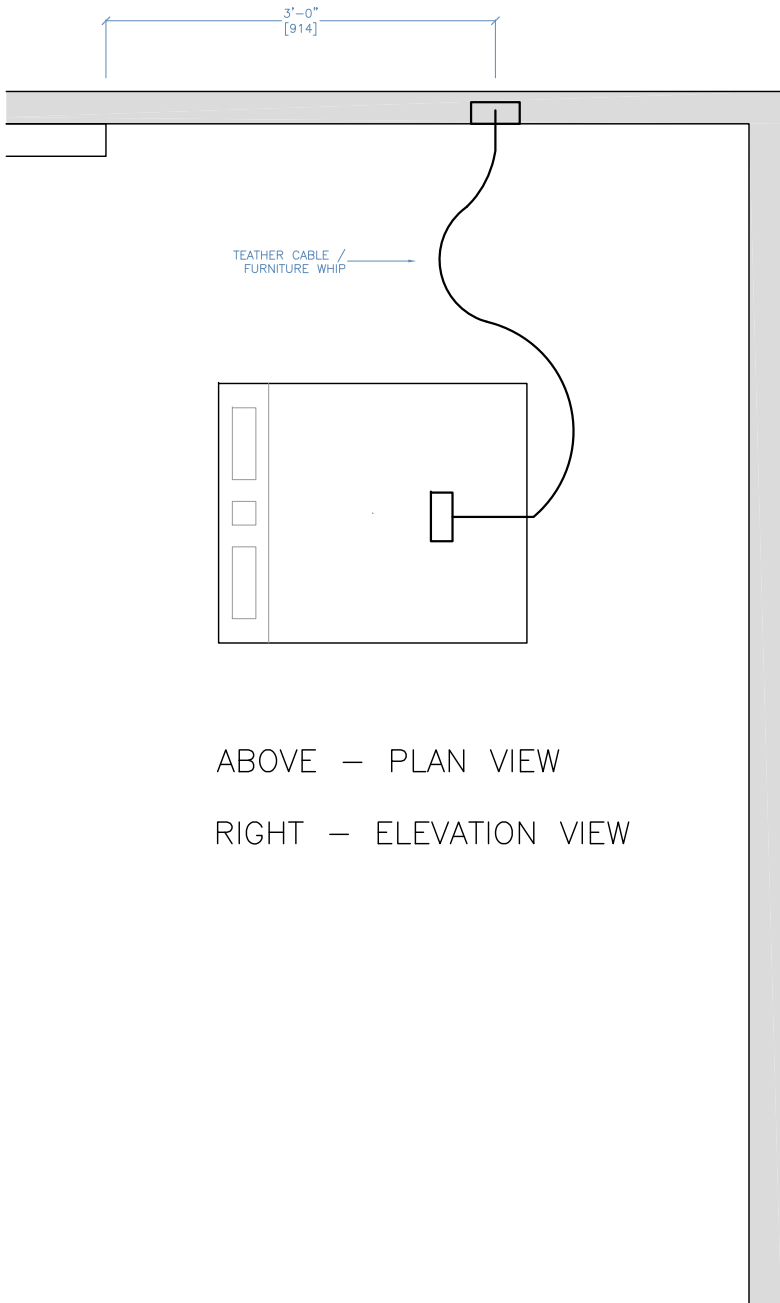
### DRAWING

BURL CRONE (UoFT)  
burl.crone@utoronto.ca

### NOTE

BUILDER MAY MAKE INCREMENTAL  
CHANGES FOR CONSTRUCTION  
PURPOSES AS LONG AS  
FUNCTION IS RETAINED





## E-5

CONDUIT  
TERMINATION  
FLOATING

PROJECT

TEACHING STATION JR  
UoT AV CONTROL BASE FOR  
MEDIUM SIZE CLASSROOMS

DATE

UPDATED JAN 2013

DRAWING

BURL CRONE (UoT)  
burl.crone@utoronto.ca

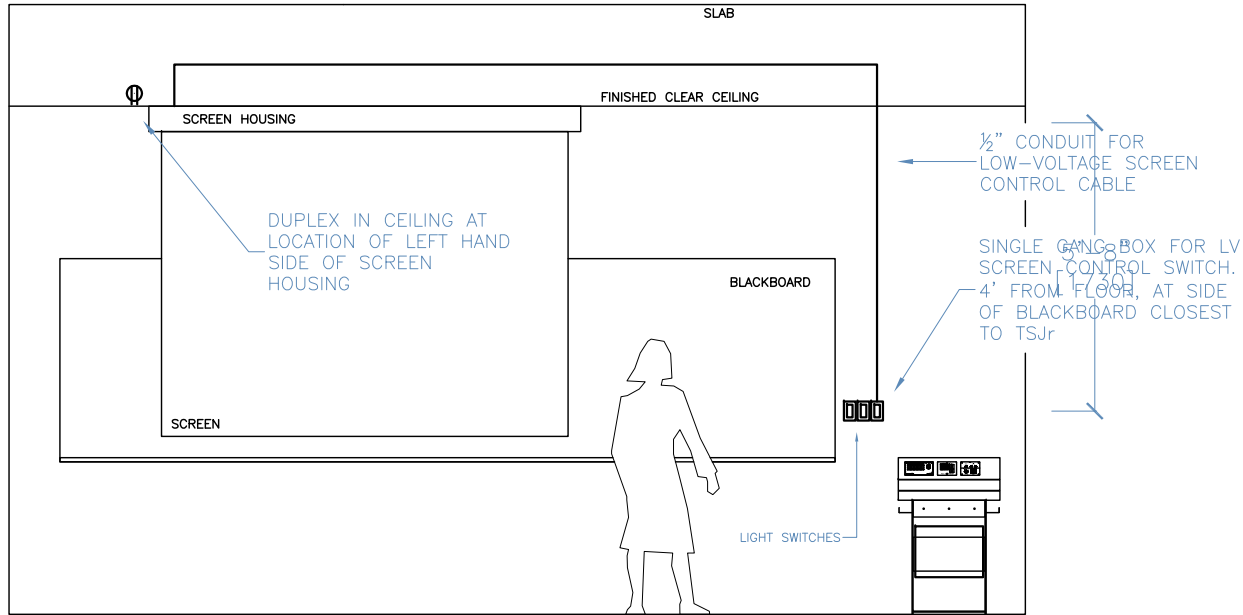
NOTE

BUILDER MAY MAKE INCREMENTAL  
CHANGES FOR CONSTRUCTION  
PURPOSES AS LONG AS  
FUNCTION IS RETAINED

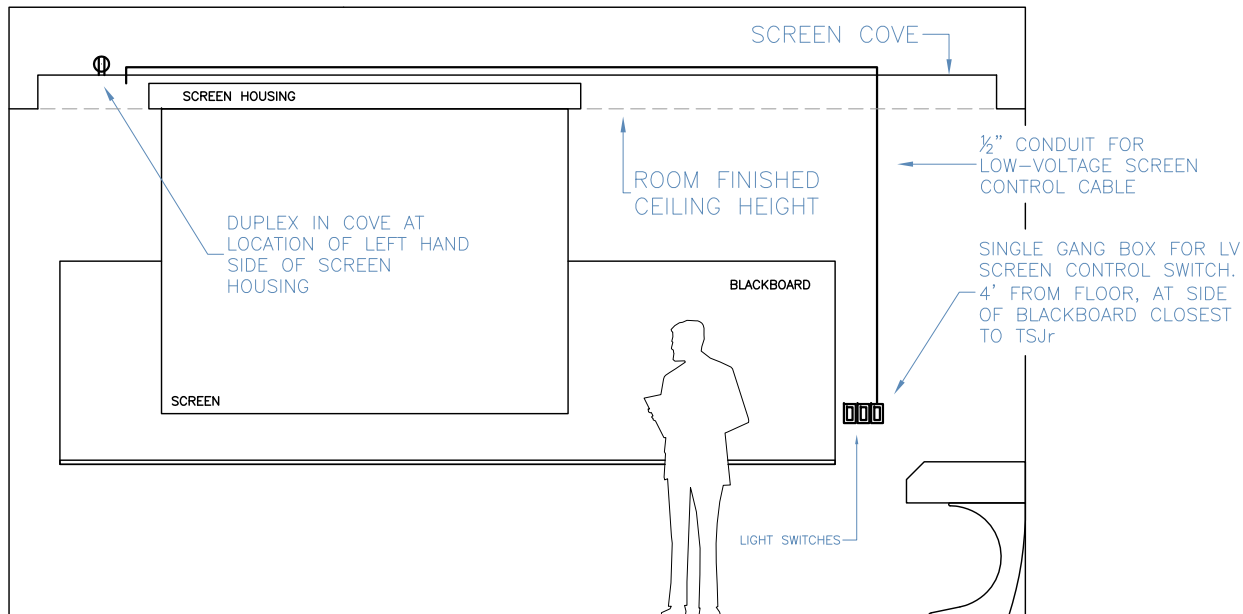


UNIVERSITY of TORONTO  
Office of Space Management  
www.osm.utoronto.ca

ELECTRIC SCREEN POWER AND SWITCH LOCATION – TYPICAL



ELECTRIC SCREEN POWER AND SWITCH LOCATION – IN SCREEN COVE



E-6  
SCREEN CONTROL

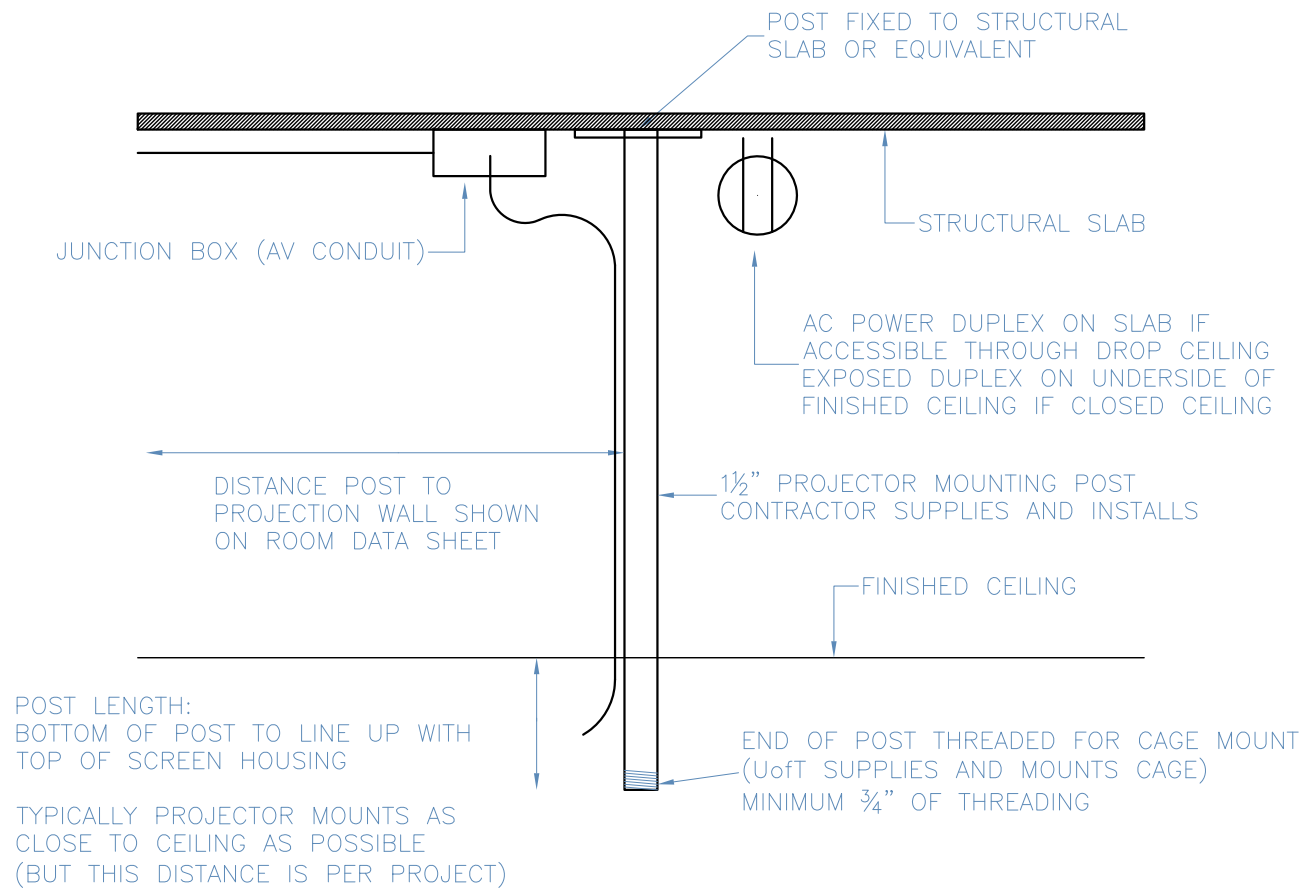
PROJECT  
TEACHING STATION JR  
UoT AV CONTROL BASE FOR  
MEDIUM SIZE CLASSROOMS

DATE  
UPDATED JAN 2013

DRAWING  
BURL CRONE (UoT)  
burl.crone@utoronto.ca

NOTE  
BUILDER MAY MAKE INCREMENTAL  
CHANGES FOR CONSTRUCTION  
PURPOSES AS LONG AS  
FUNCTION IS RETAINED





POST SPEC:

1 1/2" STANDARD PIPE  
STANDARD 1 1/2" PIPE THREADING ON END

(STANDARD THREAD FOR 1 1/2" PIPE IS 11.5 THREADS/INCH,  
STRAIGHT THREAD. NOMINAL DIAMETER FOR 1 1/2" PIPE IS 1 1/2"  
INTERIOR DIAMETER AND 1 9/32" EXTERIOR DIAMETER)

E-7

PROJECTOR  
POST

PROJECT

TEACHING STATION JR  
UofT AV CONTROL BASE FOR  
MEDIUM SIZE CLASSROOMS

DATE

UPDATED JAN 2013

DRAWING

BURL CRONE (UofT)  
burl.crone@utoronto.ca

NOTE

BUILDER MAY MAKE INCREMENTAL  
CHANGES FOR CONSTRUCTION  
PURPOSES AS LONG AS  
FUNCTION IS RETAINED

